



**TEL: 11 4701-6139 / 4701-6144**

## **WesternBright ECL**

Code : WBF25

**Units: 200ml**

---

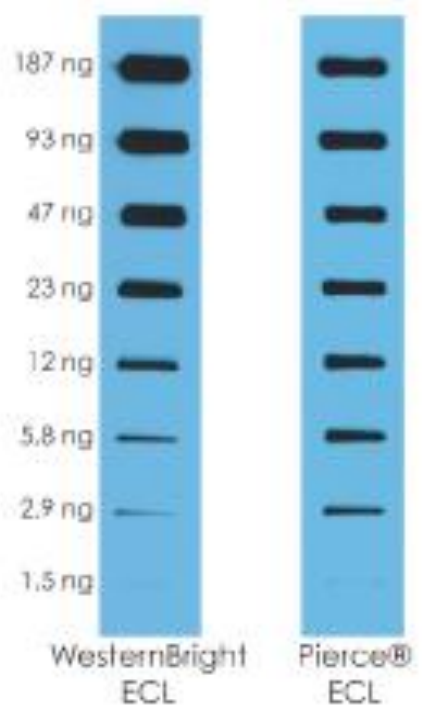
WesternBright ECL is a horseradish peroxidase substrate optimized for chemiluminescent Western blots imaged using X-ray film. WesternBright ECL requires as little as ten times less antibody than other substrates, allowing you to save precious antibodies and samples. Additionally, the WesternBright ECL signal is long lasting, allowing multiple exposures to be carried out without substantial signal decay. Kit includes: WesternBright ECL Luminol/enhancer solution and WesternBright Peroxide Chemiluminescent peroxide solution. 200ml, good for 25 mini blots.

Features:

- Stronger signal than Amersham™ ECL or Pierce™ ECL
- Detect low pg protein amounts
- Use up to ten-times less antibody

Duplicate slot blots containing serial dilutions of transferrin were probed with the antibody dilutions shown, and detected with either WesternBright ECL or Pierce ECL (Thermo Scientific) according to the manufacturers' instructions. The blots were imaged simultaneously on the same piece of film. WesternBright ECL produced the same signal with ten times less primary and five times less secondary antibody.

Veja a imagem abaixo.



Primary Antibody	1:50,000	1:5,000
Secondary Antibody	1:50,000	1:10,000